

*The Ripple Effect in
Action:
Communication,
Coordination, and
Collaboration
between
Professionals and
Family Leaders*

*Pennsylvania Family Support and Home Visiting Conference
November 14 & 15, 2022*



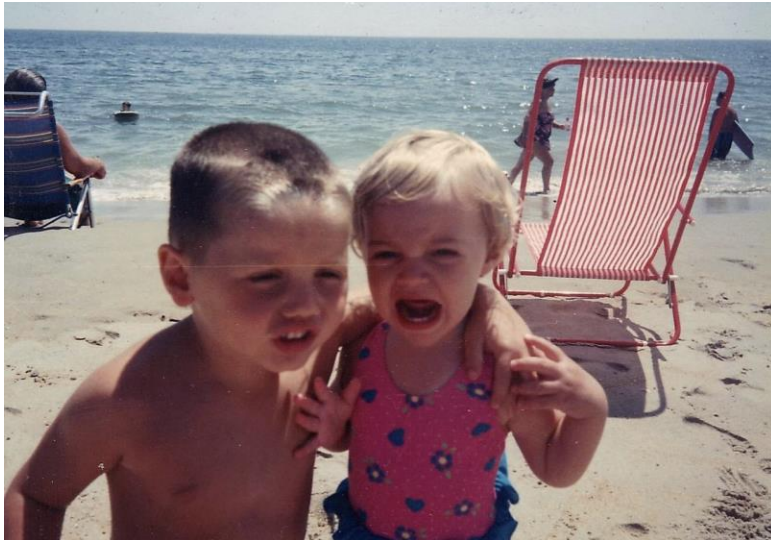
Today's Learning Objectives

An integral part of your role as Family Support and Home Visiting leaders is to support parents and caregivers to build their leadership to become strong advocates for their children, maternal and early childhood systems and broader community. This session will highlight family engagement and leadership experts who will share their diverse and dynamic expertise in how they are building capacity of Pennsylvania families moving into leadership roles at the program, local, state, and national level. Join us in creating a Ripple Effect for family leadership in Pennsylvania for a better and brighter future of our youngest citizens. This session will expand the way you see family leadership by learning how to achieve the crucial combination of supporting families in their roles as parents/caregivers and vital leaders to systems building.

Community Agreements

- Stay present , remember your "why" when you are in this space
 - Everyone is a teacher and a learner
 - Value each person's expertise and perspective
 - Respect voices in the room, so all feel safe, seen and heard
 - Respectful discourse
 - Be mindful of and avoid any acronyms or jargons
-

Early Childhood Comprehensive Systems: Health Integration Prenatal to Age Three



Christina Harris

Early Childhood Lead

c-chrisha@pa.gov



Sadia Batool

Early Childhood Family Lead

c-sabatool@pa.gov

Family Leadership in Pennsylvania Past – Parent Movement in PA



Family Leadership in Pennsylvania - Present

The Pennsylvania Family Engagement Birth through College, Career, Community Ready Framework

A tool to guide the implementation of effective practices, use of shared language, and a family engagement continuum for families across their child's educational lifespan.



Pennsylvania's Family Engagement Birth through
College, Career, Community Ready Framework:
A Companion Guide for Families



Family Engagement Definition

- Effective family engagement in the birth through college, career, community ready educational system is intentional, meaningful, and impactful.
- Learning Communities value and support families in their role as a child's first teacher. It is essential to leverage the expertise, knowledge, and leadership of families and community partners to shape the educational environment at the program, classroom, school, state, and national level.
- These partnerships are strengths based, inclusive, culturally and linguistically responsive, and rely on two-way communications. They focus on the shared goal of positive learning and developmental outcomes for children.





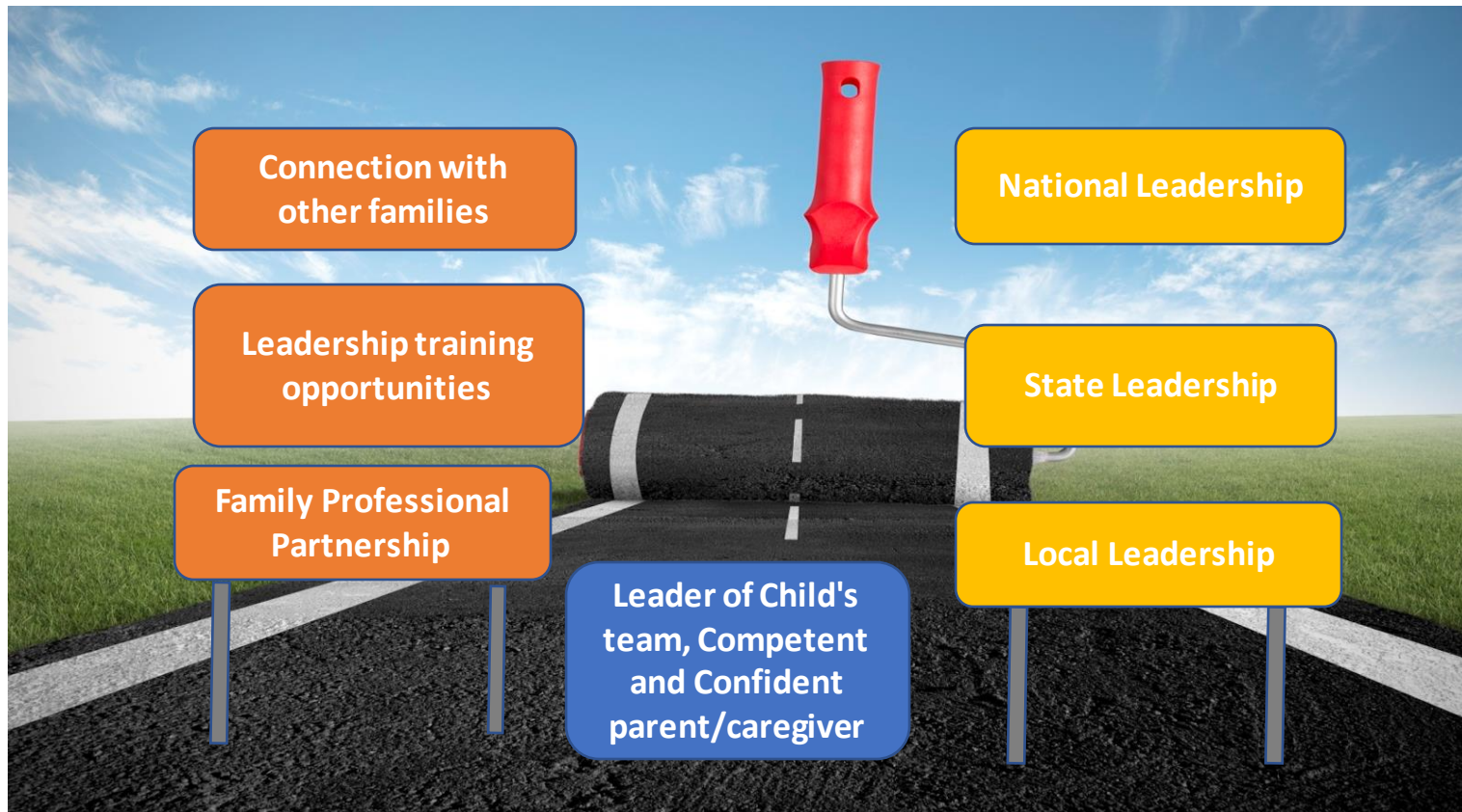
INVOLVEMENT	ENGAGEMENT	EMPOWERMENT	LEADERSHIP
Families are enrolled and participate.	Family voice informs.	Families partner to collaborate in planning and implementation.	Family Leaders are integral decision makers.
The system designs all policies, programs, and evaluation tools for family participants.	The system learns from family voices through surveys, focus groups and interviews.	The system changes approach with family partners.	The system designs policies, programs and evaluation tools with family leaders.

Adapted from Michigan's Parent Voice and Leadership Continuum

Family Leadership in Pennsylvania - Future



Family Leadership – Vision for the future



Family Leadership in Continuous Quality Improvement Projects

- [Partnering With Families in Continuous Quality Improvement: The Maternal, Infant, and Early Childhood Home Visiting Program](#)
 - [Partnering With Families in Continuous Quality Improvement: Tools and Applied Strategies*](#)
 - [FRIENDS 2021 Annual State Summary of Exemplary Practices: Parent Leadership/Engagement Infrastructure](#)
 - Center for the Study of Social Policy's [Ripples of Transformation: Families Leading Change in Early Childhood Systems](#)
-

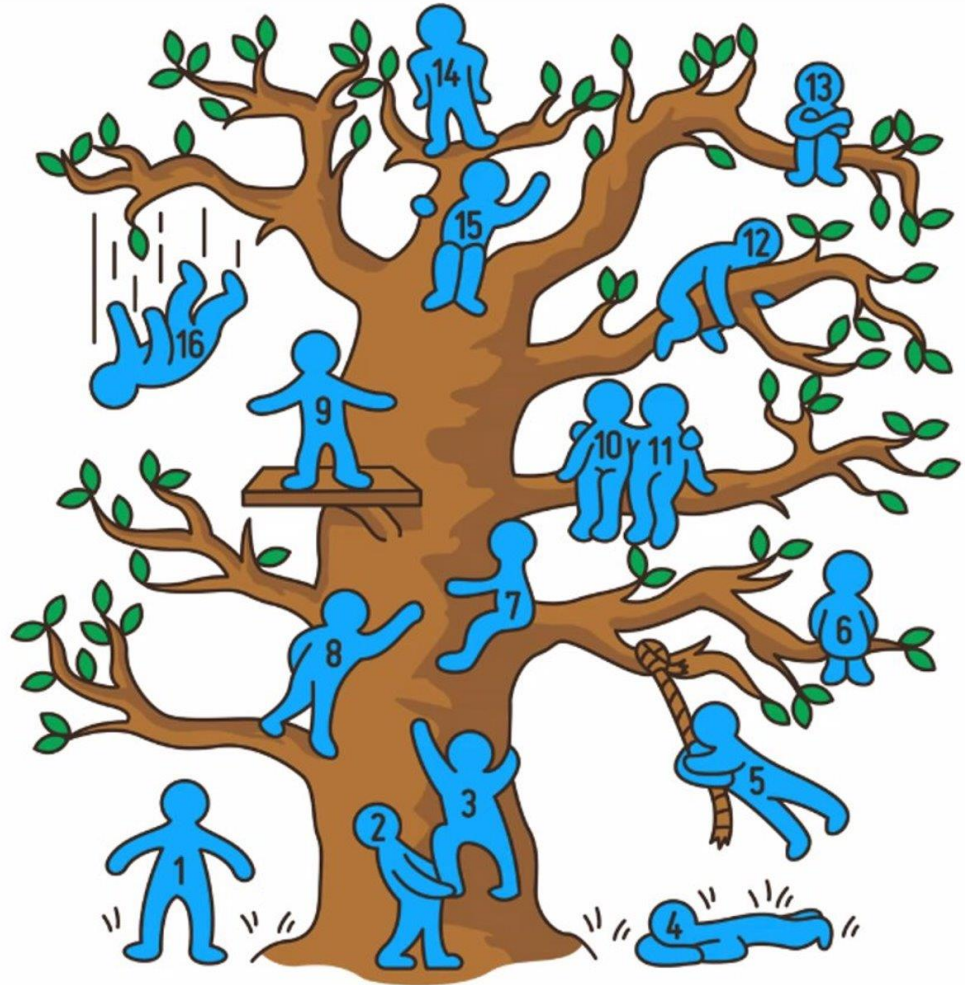
Ripple Effect in Action



Ripple Effect in Action: Leadership Lessons Learned



Community Builder



Welcome Panelists

- **Lisa Parker** – Director, Bureau of Early Intervention Services and Family Supports (liparker@pa.gov)
 - **Sarah Holland** - Director, Parent to Parent of Pennsylvania and Family Engagement Initiatives (sholland@parenttoparent.org)
 - **Mary Mikus** - Education Consultant, Early Intervention Technical Assistance (mmikus@pattankop.net)
 - **Beth Eberly** - Coordinator of Early Learning Services, Community Action Partnership, Lancaster County (beberly@caplanc.org)
-

Questions or Comments?



Resources

- [Early Childhood Comprehensive Systems Health Integration Prenatal-to-Three \(ECCS\) Project](#)
 - [Pennsylvania Family Engagement Birth through College, Career, Community Ready Framework](#)
 - [Pennsylvania Family Engagement Birth through College, Career, Community Ready Framework – A Companion Guide for families](#)
-

“...No matter how skilled professionals are, nor how loving families are, each cannot achieve alone, what the parties, working hand-in-hand, can accomplish together.”



(Adapted from Peterson and Cooper as cited in 2007)

THANK YOU!

Christina Harris c-chrishar@pa.gov

Sadia Batool c-sabatool@pa.gov
