



Welcome

**Family Support and Home Visiting
Conference**

November 14th and 15th

Introductions

OCDEL

- Lisa Parker, Bureau Director EI&FS, OCDEL
- Staci Kenney, Division Chief EI&FS, OCDEL
- Andrew Dietz, Family Support Program Manager, OCDEL, anddietz@pa.gov
- Greg Swartzlander, OCDEL, gswartzlan@pa.gov
- Matt Firestone, OCDEL, matfiresto@pa.gov
- Redd, James, Fiscal Management Specialists, OCDEL, jaredd@pa.gov

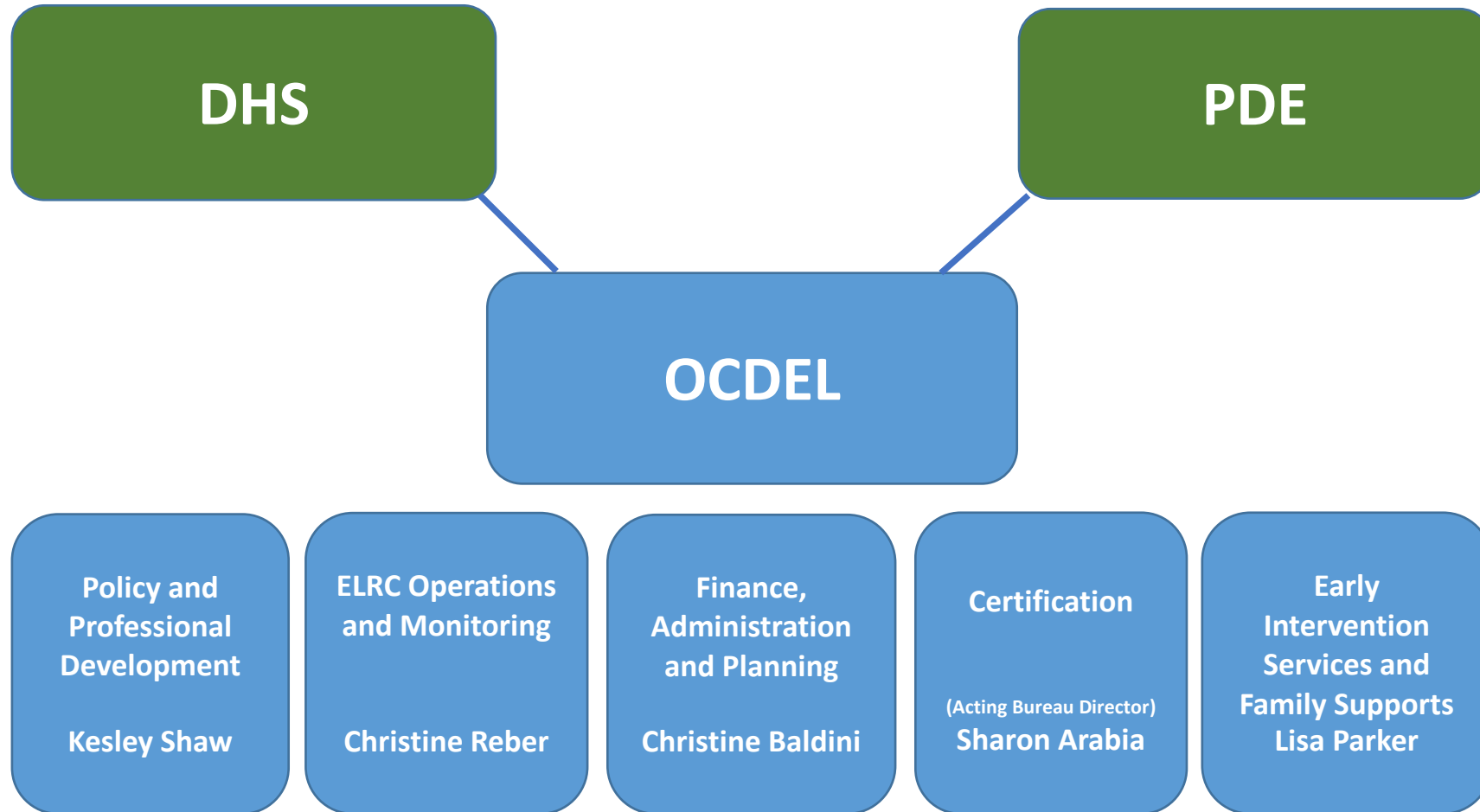
EITA

- Ashley Ankeny, Family Support Consultant, EITA, aankenypattan.net
- Heather Powell, Family Support Consultant, EITA, hpowellpattan.net
- Ilcia Voughs, Family Support Consultant, EITA, ivoughspattan.net

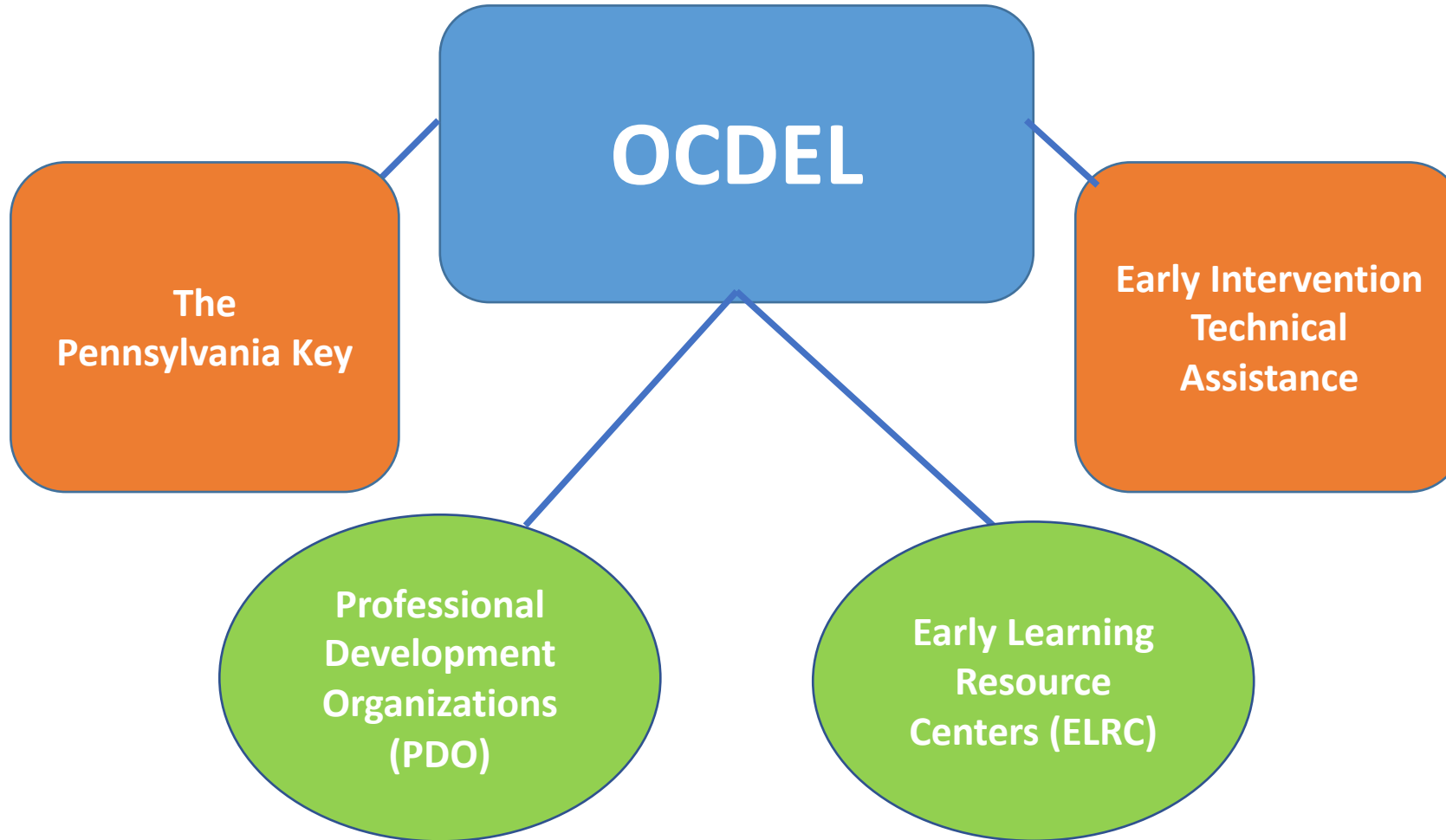
PaKEY

- James Powell, Fiscal Specialists, PaKey, jampow@pakeys.org

OCDEL's Structure



OCDEL's Business Partners





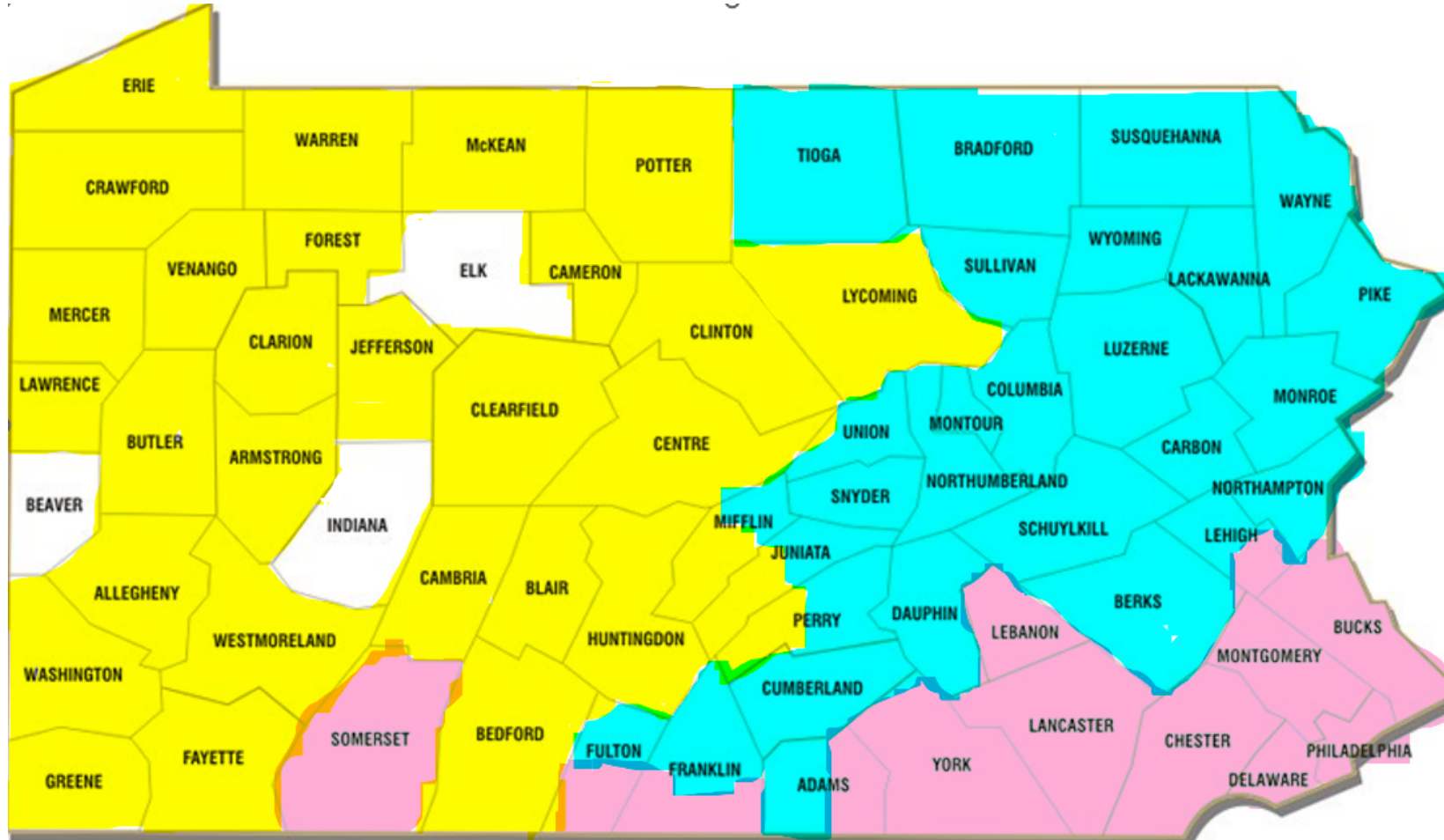
OCDEL's Vision and Mission

OCDEL's Vision

- *The Pennsylvania Office of Child Development and Early Learning supports families and their children, from prenatal through school age, by using data, research, and stakeholder guidance to assure high quality services.*

OCDEL's Mission

- *The Office of Child Development and Early Learning provides families access to high quality services to prepare children for school and life success.*



- Ashley
- Iecia
- Heather

Agreements

- Speak From Your Own Experience 
- Listen Attentively 
- No Judgments 
- No Advice 
- Confidentiality 
- Full Presence 

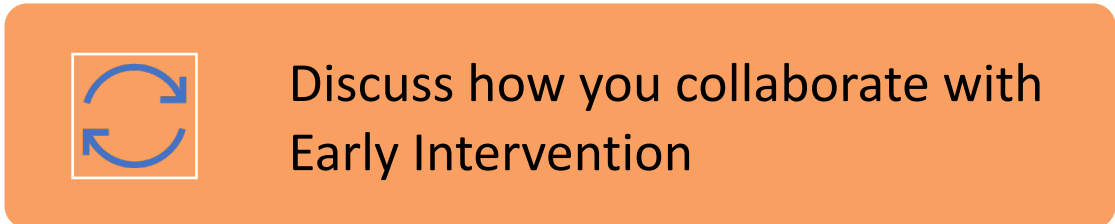
Program Introductions


In your groups please:

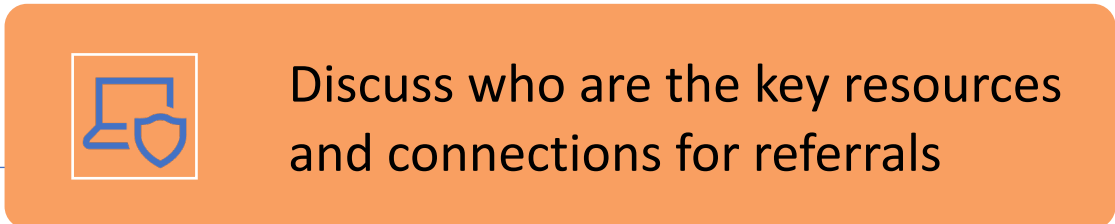
- **Introduce yourself**
- **What Organization are you from**
- **What counties do you serve**
- **EBHV and Enhancements being implementing if applicable**
- **What is one thing that you would like the group to know that they may not already**


[illegible]

” In your groups please:



 Discuss how you collaborate with Early Intervention



 Discuss who are the key resources and connections for referrals

The background features a warm, orange-toned gradient with several autumn leaves scattered around. A large, semi-transparent white circle is positioned on the left side of the image. Inside this circle, the text "Thank you" is written in a dark blue, sans-serif font. Below the text is a short horizontal line. Further down, the text "See you at our next breakout" and "11:30-12:15" is displayed in the same font and color. The leaves are in various shades of orange, yellow, and red, with some showing detailed vein patterns.

Thank you

**See you at our next breakout
11:30-12:15**