



22



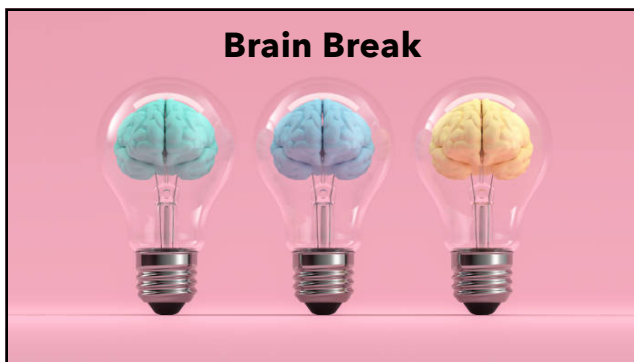
23



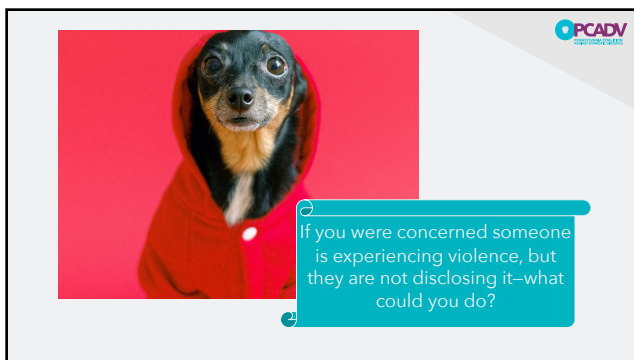
24



25



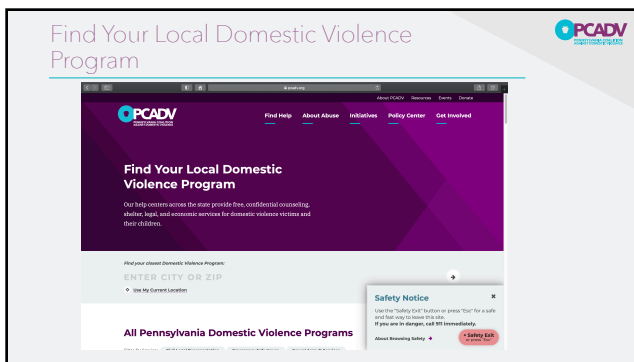
26



27



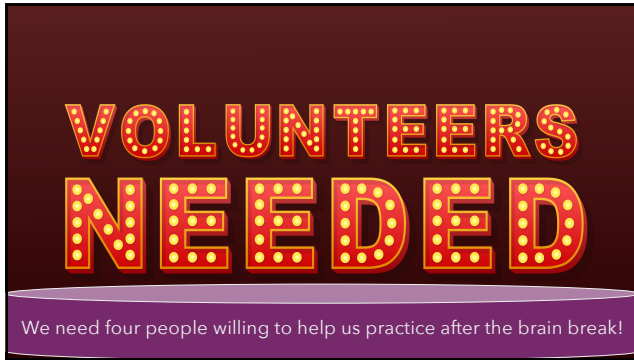
28



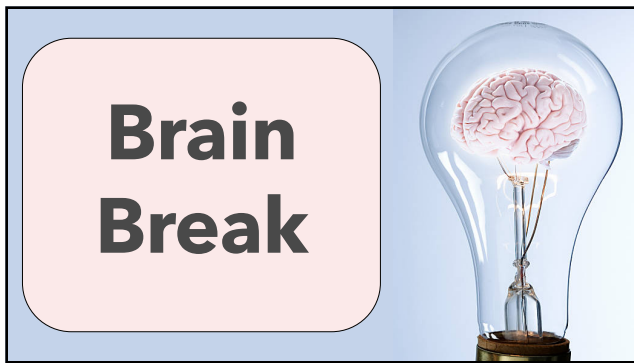
29



30



31



32

Practice Scenario

Jordan is one of your clients that you saw before the pandemic began. They were a single parent when you met them, but during the pandemic, they met someone at work and have been dating them for about six months. Jordan is excited to tell you that they got engaged on Valentine's Day. They tell you that they are probably going to be moving soon—they will still be in the county but are moving closer to their partner's family.

Does anything you hear concern you?

Role play with us how could you address those concerns.

33

OPCADV
Oncology Practice Center for Advanced Development & Validation

You work with a couple who you cannot get to meet with you separately. You notice that while Chris is often talkative and upbeat when speaking with you, they are quick to interrupt their partner Sam when they are trying to talk. You overheard Chris speaking harshly to Sam when they thought they were muted before a session started. Sam seems to be nervous about meeting with you and when you mention the idea of meeting one-on-one with each of them, Chris says "Look, I don't have anything to hide".

Please talk through how you would respond to this scenario.

34

OPCADV
Oncology Practice Center for Advanced Development & Validation

Ash has been a client for several years. Since going virtual, Ash has a tough time finding a quiet place to talk, has missed several appointments without notifying you, and has changed phone numbers a few times. Before the pandemic, Ash had been saying that things with their partner had not been working out and they were considering trying to get their own apartment or moving in with their mom. The pandemic changed these plans for Ash, who also recently lost their job.

Concerns?

Responses?

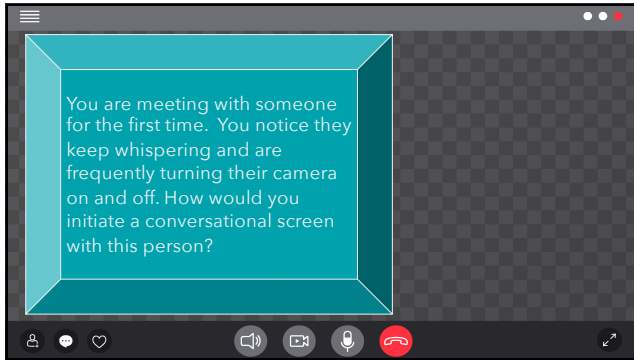
35

OPCADV
Oncology Practice Center for Advanced Development & Validation

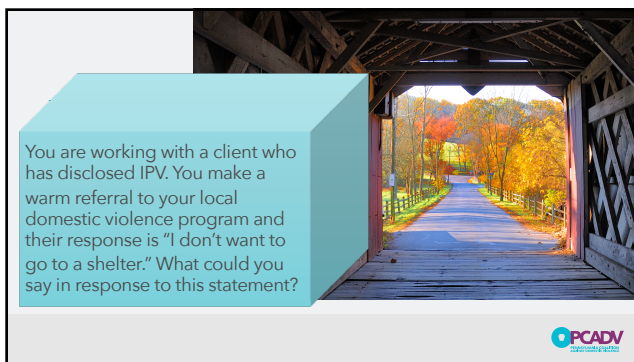
A client discloses their partner makes them feel scared and has hit them on occasion.

How could you react to this situation?

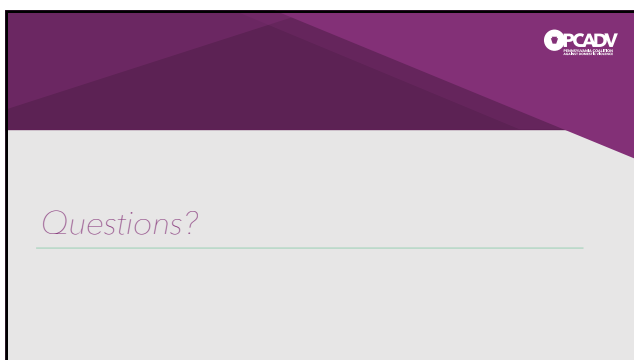
36



37



38



39

Contact
Information

Mae Reale
Health Education Specialist
PCADV
mreale@pcadv.org
Phone: (717)-545-6400 ext. 118

Jessa Winas, MSW
Training & TA Specialist
PCADV
jwinas@pcadv.org
Phone: (717)-545-6400 ext. 193